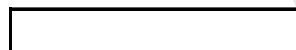


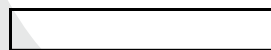
Reguladora de Fluxo com Fenda Interna Cotovelo Plástica - Série SCLF

SCLF

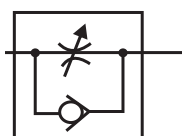
Modelo



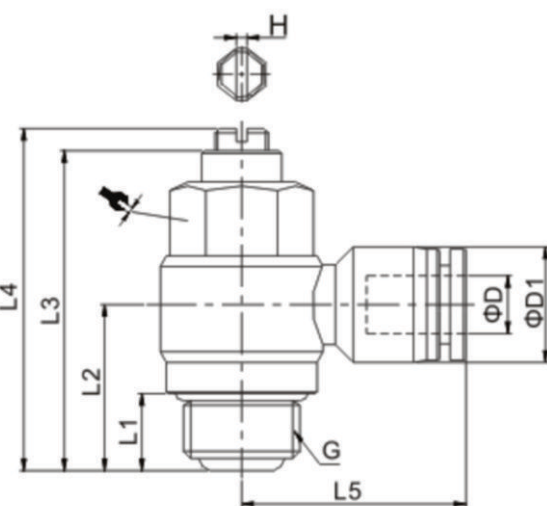
Tubo	
04	Ø4mm
06	Ø6mm
08	Ø8mm
10	Ø10mm
12	Ø12mm




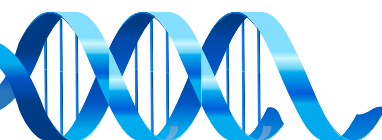
Rosca	
M5	M5
01	1/8"
02	1/4"
03	3/8"
04	1/2"


**Exemplo: SCLF06-02
SCLF08-03**

Características Técnicas					
Rosca	M5	1/8"	1/4"	3/8"	1/2"
Fluído	Ar				
Pressão máx. de trabalho (Bar)	10				
Temperatura de trabalho (°C)	-5 à 60°C				
Vazão (l/min)	100	220	460	850	1600

Dimensional


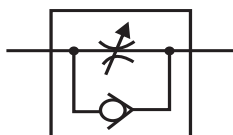
Modelo	ØD	L1	L2	L3	L4	G	L5	ØD1	H	
SCLF04-M5	4	6	37	29	32	M5	23	11.3	0.8	12
SCLF04-01	4	6	37	29	32	R 1/8"	23	11.3	0.8	12
SCLF04-02	4	8.5	44.5	34.8	37.5	R 1/4"	25.2	11.3	1.2	14
SCLF06-M5	6	6	37	29	32	M5	23	13.3	0.8	12
SCLF06-01	6	6	37	29	32	R 1/8"	23	13.3	0.8	12
SCLF06-02	6	8.5	44.5	34.8	37.5	R 1/4"	25.2	13.3	1.2	14
SCLF06-03	6	10	48	40.8	43.5	R 3/8"	26.7	13.3	1.2	19
SCLF06-04	6	12	52.5	46.6	51	R 1/2"	32	13.3	1.6	24
SCLF08-01	8	6	37	29	32	R 1/8"	25.8	15	0.8	12
SCLF08-02	8	8.5	44.5	34.8	37.5	R 1/4"	28.9	15	1.2	14
SCLF08-03	8	10	48	40.8	43.5	R 3/8"	29.8	15	1.2	19
SCLF08-04	8	12	52.5	46.8	51	R 1/2"	32.8	15	1.6	24
SCLF10-01	10	6	37	29	32	R 1/8"	30.3	19	0.8	12
SCLF10-02	10	8.5	44.5	34.8	37.5	R 1/4"	32.7	19	1.2	14
SCLF10-03	10	10	48	40.8	43.5	R 3/8"	33	19	1.2	19
SCLF10-04	10	12	52.5	46.8	51	R 1/2"	36	19	1.6	24
SCLF12-02	12	8.5	44.5	34.8	37.5	R 1/4"	33.5	21.5	1.2	14
SCLF12-03	12	10	48	40.8	43.5	R 3/8"	35.5	21.5	1.2	19
SCLF12-04	12	12	52.5	46.8	51	R 1/2"	36.5	21.5	1.6	24



Regulador de Pressão - Série R



SCL -
Modelo



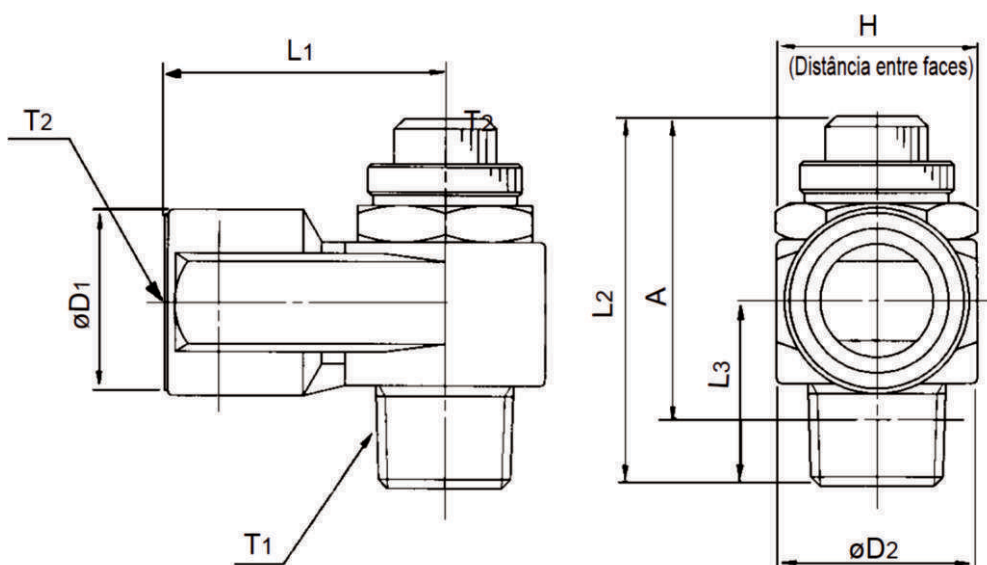
Rosca	
M5	M5
01	1/8"
02	1/4"
03	3/8"
04	1/2"

Exemplo: SCL-01
SCL-03

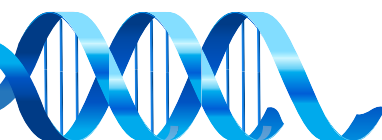
Características Técnicas					
Modelo	SCL-M5	SCL-01	SCL-02	SCL-03	SCL-04
Fluído	Ar				
Pressão de trabalho (Bar)	10				
Temperatura de trabalho (°C)	-5 à 80°C				
Vazão (l/min)	80	250	450	850	1600

Dimensional

SCL-01 / SCL-02 / SCL-03 / SCL-04

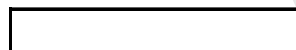


Modelo	T1	T2	H	L1	L2		L3	D1	D2	A	
					máx.	mín.				máx.	mín.
SCL-01	1/8"	1/8"	12	23	44.0	39.0	15.0	13.0	14.0	35.0	30.0
SCL-02	1/4"	1/4"	15	25.0	45.0	38.0	18	18	19.5	36.3	29.2
SCL-03	3/8"	3/8"	19	30	46.9	41.9	20.8	22.5	24.3	40.6	35.6
SCL-04	1/2"	1/2"	24	38.5	55.6	50.6	26.7	27.5	28.5	47.4	42.4

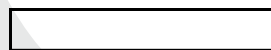


Reguladora de Fluxo Cotovelo Plástica - Série SCL

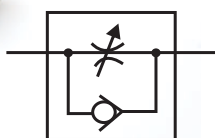

SCL
Modelo



Tubo	
04	Ø4mm
06	Ø6mm
08	Ø8mm
10	Ø10mm
12	Ø12mm

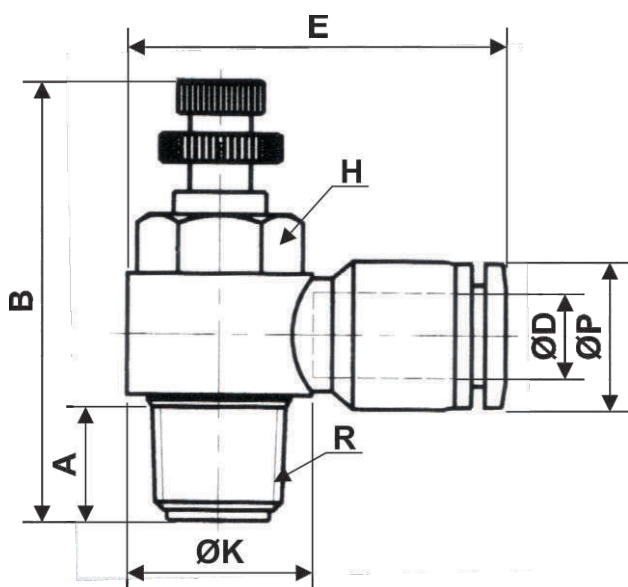


Rosca	
M5	M5
01	1/8"
02	1/4"
03	3/8"
04	1/2"

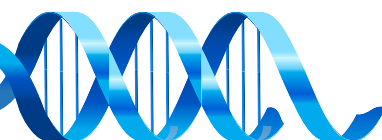


**Exemplo: SCL06-02
SCL08-03**

Características Técnicas					
Rosca	M5	1/8"	1/4"	3/8"	1/2"
Fluído	Ar				
Pressão máx. de trabalho (Bar)	10				
Temperatura de trabalho (°C)	-5 à 60°C				
Vazão (l/min)	100	220	460	850	1600

Dimensional


Modelo	ØD	E	B	ØP	A	R	H	ØK
SCL04-M5	4	24	28	10.5	3.5	M5	8	10
SCL04-01	4	28	37	10.5	7.5	R 1/8"	12	14
SCL04-02	4	32	44.5	10.5	11	R 1/4"	14	15
SCL06-M5	6	28	28	13	3.5	M5	8	10
SCL06-01	6	32	37	13	7.5	R 1/8"	12	14
SCL06-02	6	36	44.5	13	11	R 1/4"	14	18
SCL06-03	6	40	48	13	12	R 3/8"	19	22
SCL06-04	6	45.5	52.5	13	12.5	R 1/2"	24	27.5
SCL08-01	8	32.5	37	14.4	7.5	R 1/8"	12	14
SCL08-02	8	36.5	44.5	14.4	11	R 1/4"	14	18
SCL08-03	8	40.5	48	14.4	12	R 3/8"	19	22
SCL08-04	8	46	52.5	14.4	12.5	R 1/2"	24	27.5
SCL10-01	10	34.5	37	18.4	7.5	R 1/8"	12	14
SCL10-02	10	38.5	44.5	18.4	11	R 1/4"	14	18
SCL10-03	10	42.5	48	18.4	12	R 3/8"	19	22
SCL10-04	10	48	52.5	18.4	12.5	R 1/2"	24	27.5
SCL12-02	12	41.5	44.5	20	11	R 1/4"	14	18
SCL12-03	12	45.5	48	20	12	R 3/8"	19	22
SCL12-04	12	51	52.5	20	12.5	R 1/2"	24	27.5

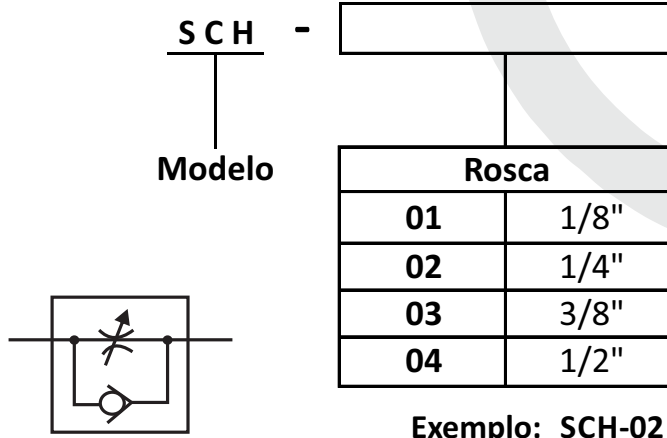




GHPC®

Tecnologia em Produtos Pneumáticos

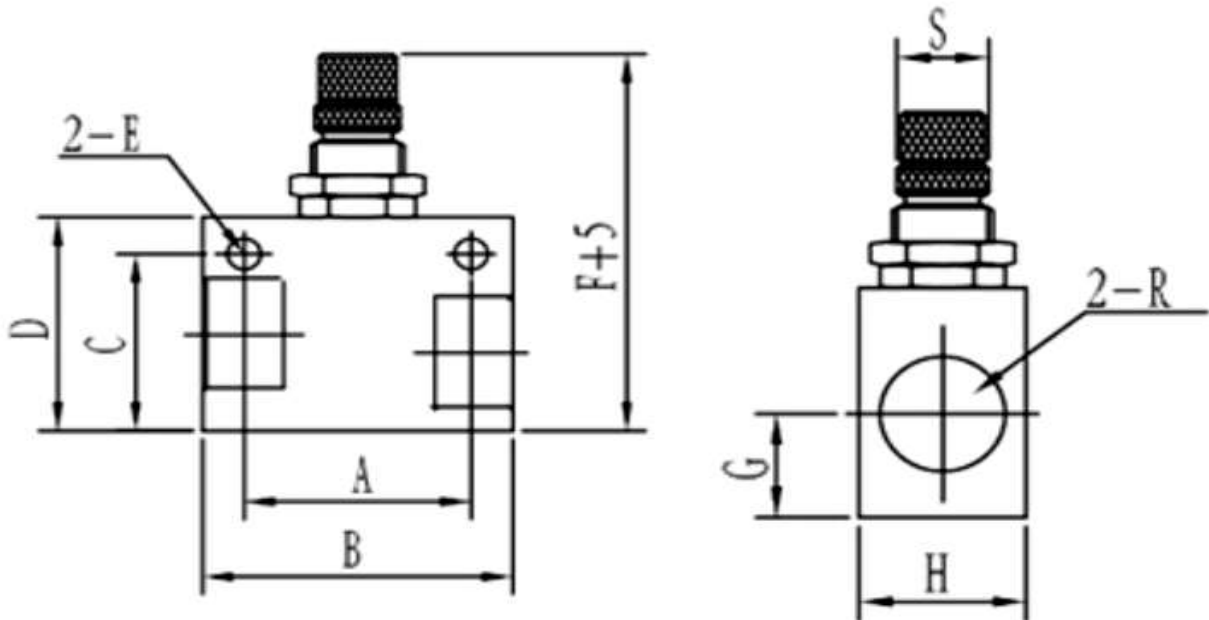
Reguladora de Fluxo Metálica em Linha de Precisão - Série SCH



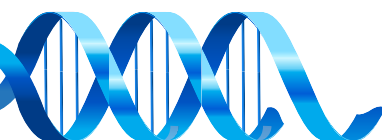
Exemplo: SCH-02
SCH-04

Características Técnicas				
Modelo	SCH-01	SCH-02	SCH-03	SCH-04
Fluído	Ar			
Pressão máx. de trabalho (Bar)	10			
Temperatura de trabalho (°C)	-5 à 80°C			
Vazão (l/min)	250	350	800	1500

Dimensional



Código	A	B	C	D	ØE	F	G	H	R	S
SCH-01	24.5	35	21	26	4.5	50	10	16	G 1/8"	M12
SCH-02	24.5	35	21	26	4.5	50	10	19	G 1/4"	M12
SCH-03	38	50	33	40	5.5	68	16	25	G 3/8"	M16
SCH-04	38	50	33	40	5.5	68	16	25	G 1/2"	M16



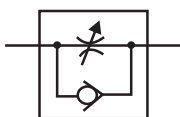
Reguladora de Fluxo em Linha - Série SCH



SCH
Modelo

[] - 00

Tubo	
04	Ø4mm
06	Ø6mm
08	Ø8mm
10	Ø10mm
12	Ø12mm

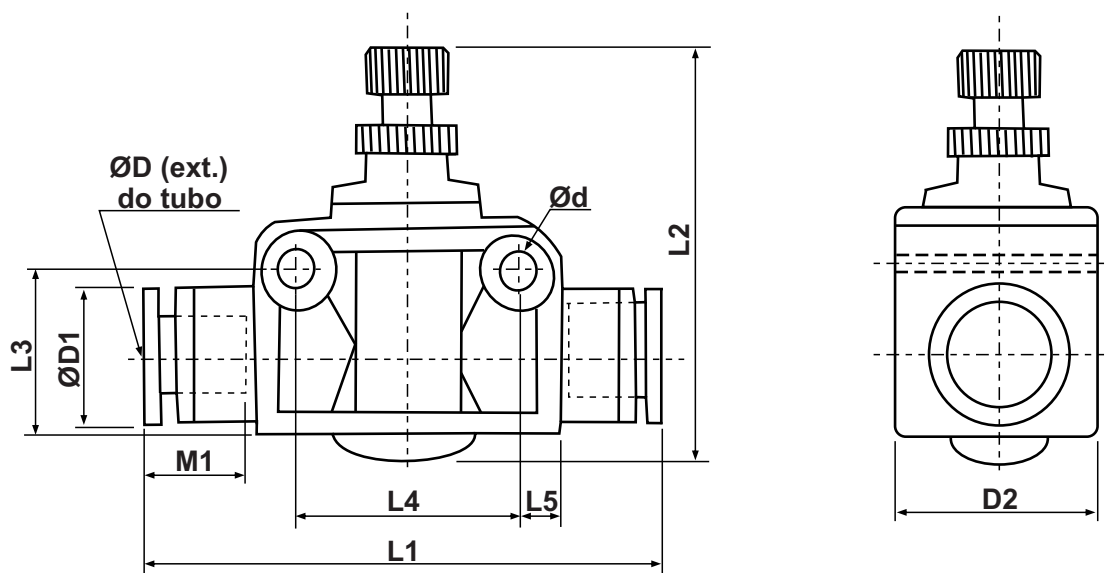


Exemplo: **SCH06-00**
SCH08-00

Características Técnicas

Tubo (mm)	Ø4	Ø6	Ø8	Ø10	Ø12
Fluído	Ar				
Pressão máx. de trabalho (Bar)	10				
Temperatura de trabalho (°C)	-5 à 60°C				
Vazão (l/min)	80	200	400	800	1200

Dimensional



Modelo	ØD	ØD1	D2	L1	L2		M1	L3	L4	L5	ød
					MÁX.	MÍN.					
SCH04-00	4	10.5	11.1	39.9	30.8	27.3	14.0	12.0	13.8	2.85	2.7
SCH06-00	6	13.0	14.7	48.2	43.4	37.3	17.0	15.0	20.3	3.75	3.75
SCH08-00	8	14.9	18.0	53.8	46.6	40.5	19.5	16.7	22.0	3.75	4.0
SCH10-00	10	18.0	20.5	62.6	52.7	47.4	21.7	20.5	25.7	3.75	4.1
SCH12-00	12	20.2	27.2	73.4	57.7	49.8	24.3	24.0	31.0	3.75	3.7

