
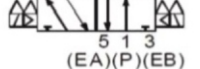



## Válvula Direcional Solenóide em INOX 316 5 vias - Série VS5

V S 5 -  
Válvula Inox 316 5 vias



Posição	Rosca		Rosca	
<b>S</b> 5/2 vias Simplex Solenóide (A)(B) 4 2  5 1 3 (EA)(P)(EB)	02	1/4"	Branco	G
	04	1/2"	N	NPT
<b>D</b> 5/2 vias Duplo Solenóide (A)(B) 4 2  5 1 3 (EA)(P)(EB)				

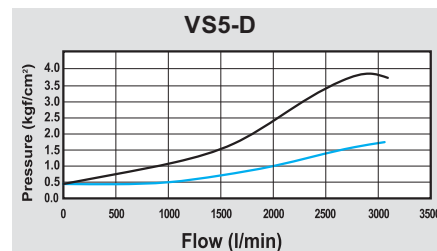
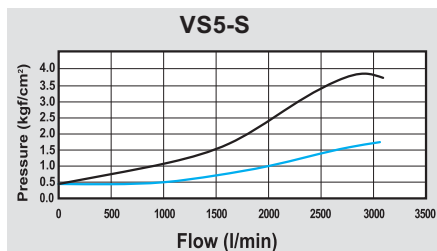
Tensão		Tipo de Conector	
12	12 Vcc	D	DIN com Led
24	24Vcc		
24A	24Vca		
110	110Vca		
220	220Vca		
380	380Vca		

Exemplo: VS5-S02-24D  
VS5-D02N-220D

MODELO	VS5-S02		VS5-D02	
Rosca	1/4"	1/2"	1/4"	1/2"
Material do Corpo	SUS 316			
Área Efetiva	35mm <sup>2</sup>	65mm <sup>2</sup>	35mm <sup>2</sup>	65mm <sup>2</sup>
Fluido	Ar Comprimido			
Ação	Piloto Interno			
Pressão de Trabalho	0 ~ 8Bar			
Pressão de Teste	15Bar			
Temperatura	-10°C ~ 60°C			
Proteção				
Peso	1000g		1200g	

Características da Bobina			
Conector		DIN	
Tensão (V)	AC (50/60Hz)	110, 220, 380	
	DC	12, 24	
Tensão Admissível		-15 a +10% da Tensão Nominal	
Consumo	AC	Arranque	4.5VA(60Hz)
		Mantido	4.5VA(60Hz)
	DC		3W
Indicador luminoso		LED	

## Gráfico de Vazão



## Reposição

Bobina para válvula Série VB3/5 com Conector DIN 43650B com Led

B - Bobina    V5 - Modelo para Válvulas VB3 e VB5    D - Conector DIN

Tensão	
12	12Vcc
24	24Vcc
110	110Vca
220	220Vca
380	380Vca

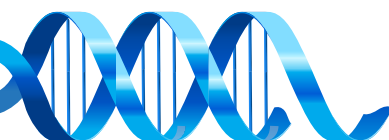
Exemplo: B-V5-24D  
B-V5-220D

Conector DIN 43650B com Led

C - Conector DIN    V5 - Modelo para Válvulas VB3 e VB5    250 - Tensão

250	12Vcc, 24Vcc, 110Vca, 220Vca e 380Vca
-----	---------------------------------------

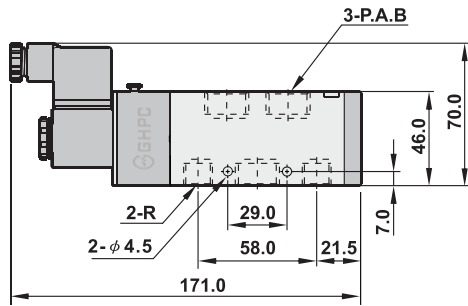
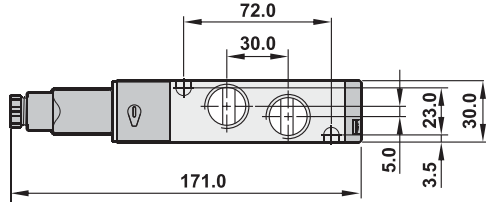
Exemplo: C-V5-250



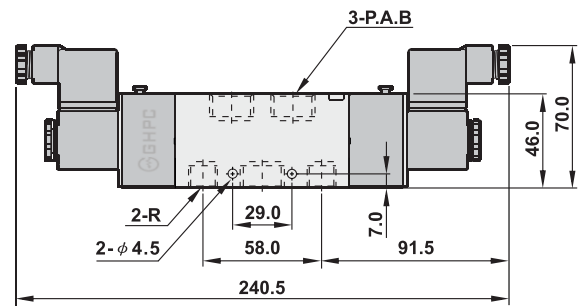
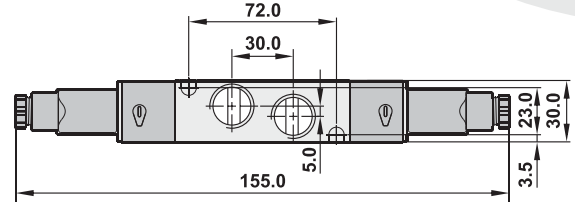
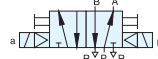
Válvula Direcional Solenóide em INOX 316 5 vias - Série VS5

Dimensional

● VS5-S



● VS5-D



MODELO	A	B	P	R
VS5-S02	1/4"	1/4"	1/4"	1/4"
VS5-S04	1/2"	1/2"	1/2"	3/8"

Itens Explodidos

