



GHPC[®]
Tecnologia em Produtos Pneumáticos

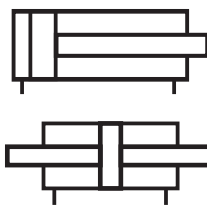
Catálogo Técnico

Atuador Tirantado ISO6431/VDMA24562 DIN34335

Série CTM



Atuador Pneumático ISO 6431 / VDMA 24562 / DIN 24335 - Série CTM

Simbologia

Características Técnicas

Diâmetro do cilindro (mm)	32	40	50	63	80	100	125	160	200	250
Diâmetro da haste (mm)	12	16	20	20	25	25	32	40	40	50
Rosca da haste	M10 X 1.25	M12 X 1.25	M16 X 1.5	M20 X 1.5	M20 X 1.5	M27 X 2	M27 X 2	M36 X 2	M36 X 2	M42 X 2
Ligações	G 1/8"	G 1/4"	G 1/4"	G 3/8"	G 3/8"	G 1/2"	G 1/2"	G 3/4"	G 3/4"	G 1"
Pressão de teste (bar)	15									
Pressão máx. de trabalho (bar)	10									
Temperatura de trabalho (°C)	-5 ~ 70									
Velocidade de trabalho (mm/s)	50 - 800									

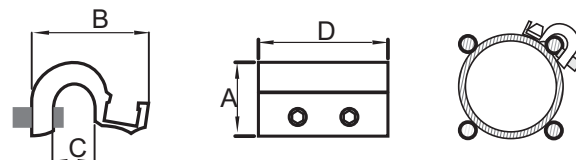
Codificação

CTM		-		-	
Modelo					
	Diâmetro (mm)		Curso (mm)	Vedação	Haste
	32 100		Máx. 2000	--- NBR	--- Simples
	40 125			V Viton (180°C)	P Passante
	50 160				I Inox
	63 200				
	80 250				

Exemplo: CTM50-300 / CTM80-500V / CTM100-150-P / CTM160-200V-P

Sensor Aplicável

SM-37		-	
	Tipo		Cabo
	R Reed (2 fios)		2.5M 2 metros
	P PNP (3 fios)		M8 Conector M8
	N NPN (3 fios)		



Suportes Aplicáveis						
Modelo	Dimen. Ø do Cil.	A	B	C	D	
DTM-01	32/40/50/63	14.07	22.4	7.9	25	
DTM-02	80/100	17.05	24.7	10.4	25	
DTM-03	125	24.9	29.7	14.9	25	
DTM-04	160/200	27.5	35.5	16.5	25	

Exemplo: **SM-37P-M8**
SM-37N-2M

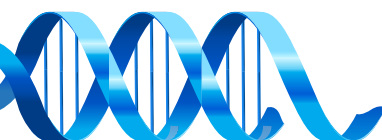
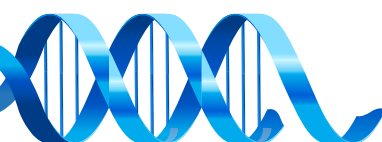


Tabela de Força Teórica

Unidade: N

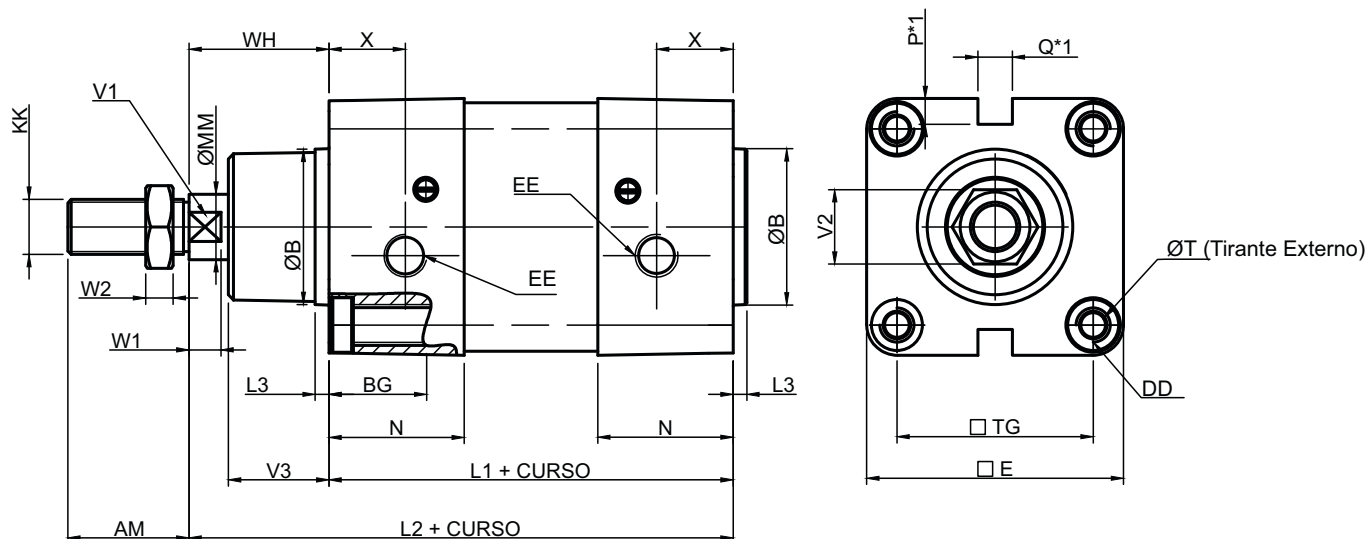
CILINDRO Ø (mm)	HASTE Ø (mm)	SENTIDO DO MOVIMENTO	ÁREA EFECTIVA (mm ²)	PRESSÃO DE TRABALHO DA LINHA								
				2	3	4	5	6	7	8	9	10
32	12	AVANÇO	804,25	160,85	241,28	321,70	402,13	482,55	562,98	643,40	723,83	804,25
		RETORNO	691,15	138,23	207,35	276,46	345,58	414,69	483,81	552,92	622,04	691,15
40	16	AVANÇO	1256,64	251,33	376,99	502,66	628,32	753,98	879,65	1005,31	1130,98	1256,64
		RETORNO	1055,58	211,12	316,67	422,23	527,79	633,35	738,91	844,46	950,02	1055,58
50	20	AVANÇO	1963,5	392,70	589,05	785,40	981,75	1178,10	1374,45	1570,80	1767,15	1963,50
		RETORNO	1055,58	211,12	316,67	422,23	527,79	633,35	738,91	844,46	950,02	1055,58
63	20	AVANÇO	3117,25	623,45	935,18	1246,90	1558,63	1870,35	2182,08	2493,80	2805,53	3117,25
		RETORNO	2809,1	561,82	842,73	1123,64	1404,55	1685,46	1966,37	2247,28	2528,19	2809,10
80	25	AVANÇO	5026,56	1005,31	1507,97	2010,62	2513,28	3015,94	3518,59	4021,25	4523,90	5026,56
		RETORNO	4535,68	907,14	1360,70	1814,27	2267,84	2721,41	3174,98	3628,54	4082,11	4535,68
100	25	AVANÇO	7854	1570,80	2356,20	3141,60	3927,00	4712,40	5497,80	6283,20	7068,60	7854,00
		RETORNO	7363,12	1472,62	2208,94	2945,25	3681,56	4417,87	5154,18	5890,50	6626,81	7363,12
125	32	AVANÇO	12271,87	2454,37	3681,56	4908,75	6135,94	7363,12	8590,31	9817,50	11044,68	12271,87
		RETORNO	11467,62	2293,52	3440,29	4587,05	5733,81	6880,57	8027,33	9174,10	10320,86	11467,62
160	40	AVANÇO	20106,24	4021,25	6031,87	8042,50	10053,12	12063,74	14074,37	16084,99	18095,62	20106,24
		RETORNO	18849,6	3769,92	5654,88	7539,84	9424,80	11309,76	13194,72	15079,68	16964,64	18849,60
200	40	AVANÇO	31416	6283,20	9424,80	12566,40	15708,00	18849,60	21991,20	25132,80	28274,40	31416,00
		RETORNO	30159,36	6031,87	9047,81	12063,74	15079,68	18095,62	21111,55	24127,49	27143,42	30159,36
250	50	AVANÇO	49087,5	9817,50	14726,25	19635,00	24543,75	29452,50	34361,25	39270,00	44178,75	49087,50
		RETORNO	47124	9424,80	14137,20	18849,60	23562,00	28274,40	32986,80	37699,20	42411,60	47124,00



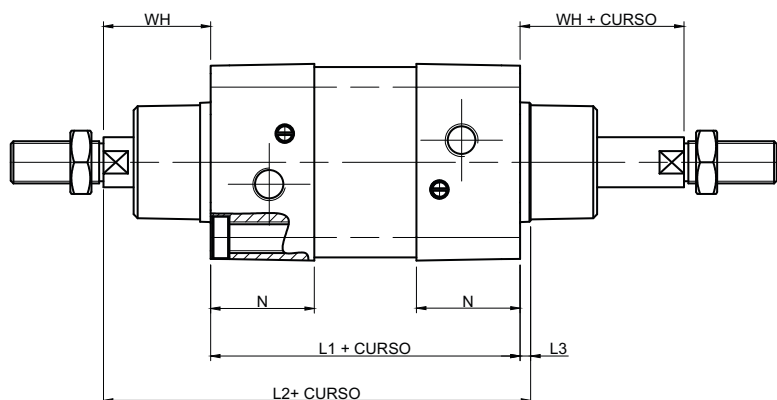
Atuador Pneumático ISO 6431 / VDMA 24562 / DIN 24335 - Série CTM

Kit de Reparo		
Ø do cilindro	Código	Compõe o kit
32	KR-CT32	Raspador dianteiro; Vedação do êmbolo; Vedação da tampa.
40	KR-CT40	
50	KR-CT50	
63	KR-CT63	
80	KR-CT80	
100	KR-CT100	
125	KR-CT125	
160	KR-CT160	
200	KR-CT200	
250	KR-CT250	

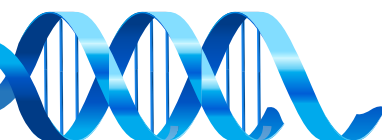
Kit de Reparo para Cilindro de Haste Passante		
Ø do cilindro	Código	Compõe o kit
32	KR-CT32P	Raspador (2 peças); Vedação do êmbolo; Vedação das tampas (2 peças).
40	KR-CT40P	
50	KR-CT50P	
63	KR-CT63P	
80	KR-CT80P	
100	KR-CT100P	
125	KR-CT125P	
160	KR-CT160P	
200	KR-CT200P	
250	KR-CT250P	

Dimensional







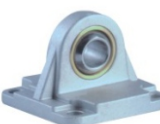

Ø Cil.	AM	ØB	BG	DD	E	EE	KK	L1	L2	L3	ØMM	P*1	Q*1	ØT	N	TG	V1	V2	V3	W1	W2	WH	X
32	22	30	15	M6x1	47	G1/8"	M10x1.25	94	120	3.5	12	5.5	7	6	29	32.5	10	17	20	6	6	26	16
40	24	35	15	M6x1	54	G1/4"	M12x1.25	105	135	4	16	5	7	6	29.5	38	13	19	22	7	7	30	17
50	32	40	18	M8x1.25	65	G1/4"	M16x1.5	106	143	4	20	5	7	8	32	46.5	17	24	29	7	8	37	18
63	32	45	18	M8x1.25	78,5	G3/8"	M16x1.5	121	158	4	20	5	7	8	39	56.5	17	24	29	7	8	37	22
80	40	45	21	M10x1.5	96	G3/8"	M20x1.5	128	174	4	25	5	7	10	39	72	22	30	35	10	9	46	22
100	40	55	21	M10x1.5	115	G1/2"	M20x1.5	138	189	4	25	5	7	10	44	89	22	30	35	10	9	51	28
125	54	60	21	M12x1.75	145	G1/2"	M27x2	160	225	10	32	-	-	12	45	110	27	41	45	12	12	65	28
160	72	65	24	M16x2	175	G3/4"	M36x2	180	260	10	40	-	-	16	56	140	36	55	50	14	14	80	34
200	72	75	24	M16x2	218	G3/4"	M36x2	180	275	12	40	-	-	16	48	175	36	55	61,5	16	14	95	27







Haste Passante


Ø Cilindro	WH	N	L1	L2	L3
32	26	29	94	120	3,5
40	30	29,5	105	135	4
50	37	32	106	143	4
63	37	39	121	158	4
80	46	39	128	174	4
100	51	44	138	189	4
125	65	45	160	225	6
160	80	56	180	260	6
200	95	48	180	275	6



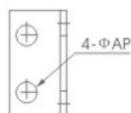
Acessórios de Montagem

Fixação tipo Pés	Rótula Esférica	Fixação Traseira Macho	Fixação Traseira Fêmea	Fixação Traseira Macho Deslocado	Fixação Traseira Macho c/ Rótula	Fixação tipo Flange
						
Código (Ø)	Código (Ø)	Código (Ø)	Código (Ø)	Código (Ø)	Código (Ø)	Código (Ø)
L32	K25/32	C32	D32	E32	CS32	F32
L40	K40	C40	D40	E40	CS40	F40
L50	K50/63	C50	D50	E50	CS50	F50
L63	K80/100	C63	D63	E63	CS63	F63
L80	K125	C80	D80	E80	CS80	F80
L100	K160	C100	D100	E100	CS100	F100
L125	K200	C125	D125	E125		F125
L160		C160	D160			F160
L200		C200	D200			F200

Munhão Central Deslocável	Munhão Frontal / Traseiro	Junta Flutuante	Garfo para Haste	Pino para Garfo	Fixação Traseira Macho Deslocado c/ Rótula
					
Código (Ø)	Código (Ø)	Código (Ø)	Código (Ø)	Código (Ø)	Código (Ø)
T32	TF32	JF25/32	G25/32	I-25/32	ES32
T40	TF40	JF40	G40	I-40	ES40
T50	TF50	JF50/63	G50/63	I-50/63	ES50
T63	TF63	JF80/100	G80/100	I-80/100	ES63
T80	TF80	JF125	G125	I-125	ES80
T100	TF100	JF160/200	G160/200	I-160/200	ES100
					ES125
					ES160
					ES200

Dimensional

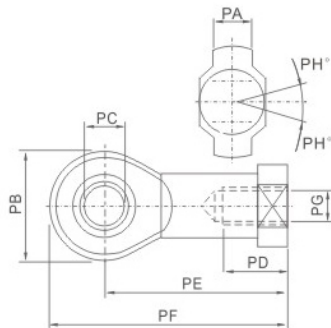
• Fixação tipo Pés



Symbol/Bore	32	40	50	63	80	100	125	160	200
AA	158	179	190	209	248	266	290	340	380
AC	142	161	170	185	210	228	250	300	320
AD	8	9	10	12	19	19	20	20	30
AE	47	53	65	75	95	115	140	180	220
AF	32	36	45	50	63	75	90	115	135
AG	24	28	32	32	41	45	45	60	70
AH	32	36	45	50	63	71	90	115	135
AP	7	9	9	9	12	14.5	16.5	18.5	24
AT	3	3	3	3	4	4	6	6	9

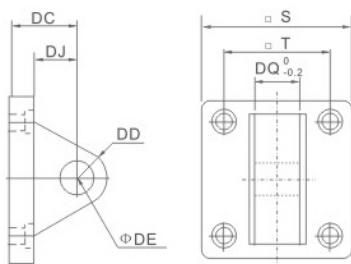
Atuador Pneumático ISO 6431 / VDMA 24562 / DIN 24335 - Série CTM

• **Rótula Esférica**



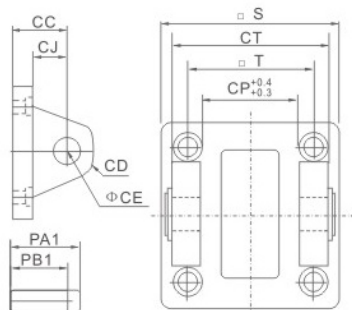
Symbol/Bore	PA	PB	PC	PD	PE	PF	PG	PH
32	11	26	10	21	43	56	M10×1.25	13
40	12	30	12	24	50	65	M12×1.25	13
50	15	38	16	33	64	83	M16×1.5	15
63	15	38	16	33	64	83	M16×1.5	15
80	18	46	20	40	77	100	M20×1.5	15
100	18	46	20	40	77	100	M20×1.5	15
125	37	70	30	51	110	145	M27×2.0	15
160	43	80	35	56	125	165	M36×2.0	16
200	43	80	35	56	125	165	M36×2.0	16

• **Fixação Traseira Macho**



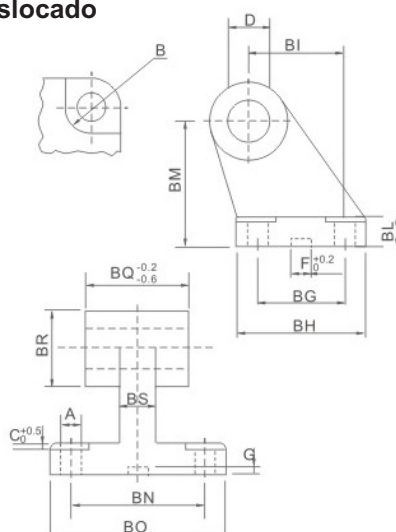
Symbol/Bore	32	40	50	63	80	100	125	160	200
S	47	53	65	75	95	115	140	180	220
T	32.5	38	46.5	56.5	72	89	110	140	175
DC	22	25	27	32	36	41	50	55	60
DD	9	12	12	15	15	20	25	30	30
DE	10	12	12	16	16	20	25	30	30
DJ	13	16	17	22	22	27	33	35.5	36
DQ	25.8	27.8	31.7	39.7	49.7	59.7	69.7	89.7	89.7

• **Fixação Traseira Fêmea**



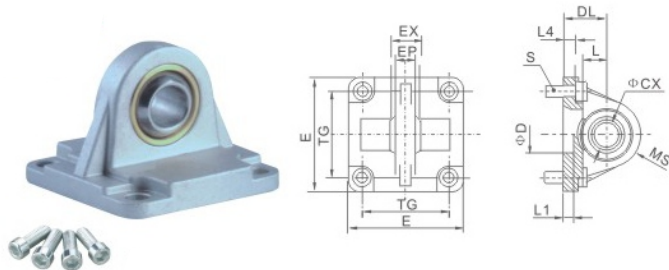
Symbol/Bore	32	40	50	63	80	100	125	160	200
CC	22	25	27	32	36	41	50	55	60
CD	9	12	12	15	15	20	25	30	30
CE	10	12	12	16	16	20	25	30	30
CJ	13	16	17	22	22	27	31	35.5	36
CP	26	28	32	40	50	60	70	90	90
CT	45	52	60	70	90	110	130	170	170
PA1	51	59	67	77	97	119	139	181	181
PB1	45.5	52.5	60.5	70.5	90.5	110.5	130.5	170.5	170.5
S	47	53	65	75	95	115	140	180	220
T	32.5	38	46.5	56.5	72	89	110	140	175

• **Fixação Traseira Macho Deslocado**

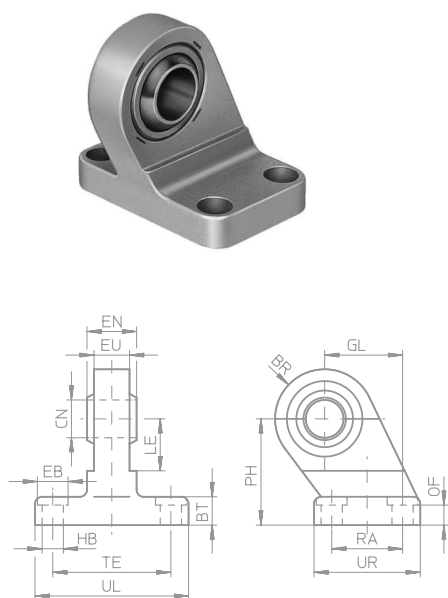


Symbol/Bore	32	40	50	63	80	100	125
A	6.6	6.6	9	9	11	11	14
B	11	11	15	15	18	18	20
BG	18	22	30	35	40	50	60
BH	31	35	45	50	60	70	90
BI	21	24	33	37	47	55	70
BL	8	10	12	14	14	17	20
BM	32	36	45	50	63	71	90
BN	38	41	50	52	66	76	94
BO	51	54	65	67	86	96	124
BS	10	15	16	16	20	20	30
BR	20	22	26	30	30	38	45
C	1.6	1.6	1.6	1.6	2.5	2.5	3.2
D	10	12	12	16	16	20	25
F	10.5	10.5	10.5	10.5	10.5	10.5	10.5
G	3	3	3	3	3	3	3
BQ	26	28	32	40	50	60	70

ISO-SDB Type

Atuador Pneumático ISO 6431 / VDMA 24562 / DIN 24335 - Série CTM
• Fixação Traseira Macho com Rótula Esférica


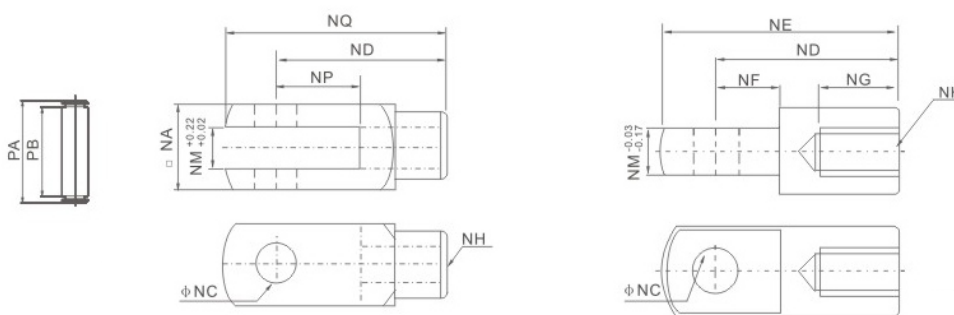
Symbol/Bore	32	40	50	63	80	100
TG	32.5	38	46.5	56.5	72	89
φCX	10	12	16	16	20	20
DL	22	25	27	32	36	41
L	12	15	15	20	20	25
EX	14	16	21	21	25	25
EP	10.5	12	15	15	18	18
S	M6×20	M6×20	M8×20	M8×20	M10×25	M10×25
L4	5.5	5.5	6.5	6.5	10	10
D	30	35	40	45	45	55
L1	7	7	7	7	9	9
E	45	52	65	75	95	115
MS	16	18	21	23	28	30

• Fixação Traseira Macho Deslocado com Rótula Esférica


Symbol/Bore	32	40	50	63	80	100	125
BR	15	17	20	22	27	29	39
BT	10	10	12	12	14	15	20
φCN	10	12	16	16	20	20	30
φEB	11	11	14	14	17	17	19
EN	14	16	21	21	25	25	37
ER	15.5	17.5	20.5	22.5	28.5	29.5	39.5
EU	10.5	12	15	15	18	18	25
GL	21	24	33	37	47	55	70
HB	6.6	6.6	9	9	10	10	14
LE	16	20	24	27	31	38	50
OF	9	9	11	11	12.5	13.5	18.5
PH	32	36	45	50	63	71	90
RA	18	22	30	35	40	50	60
TE	38	41	50	52	66	76	94
UL	51	54	65	67	86	96	124
UR	31	35	45	50	60	70	90

• Garfo para Haste

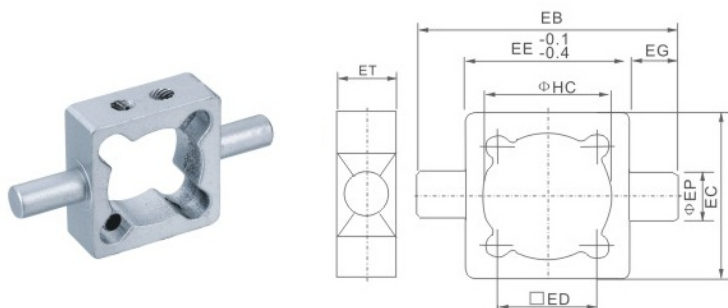
Modelo "G"

Modelo "I"

Modelo "G"
Modelo "I"

Symbol/Bore	32	40	50	63	80	100	125	160	200
NA	19	25.4	32	32	44.4	44.4	55	70	70
NC	10	12	16	16	20	20	30	35	35
ND	40	48	64	64	80	80	110	144	144
NE	52	67	89	89	112	112	155	201	201
NF	15	24	32	32	40	40	50	50	55
NG	20	20	23	23	30	30	56	72	72
NH	M10×1.25	M12×1.25	M16×1.5	M16×1.5	M20×1.5	M20×1.5	M27×2.0	M36×2.0	M36×2.0
NM	10	12	16	16	20	20	30	35	35
NP	20	24	32	32	40	40	54	72	72
NQ	52	62	83	83	105	105	148	191	191
PA	26.2	32.8	39.3	39.3	53.3	53.3	64	80	80
PB	20	26.5	33	33	45	45	55.6	70.6	70.6

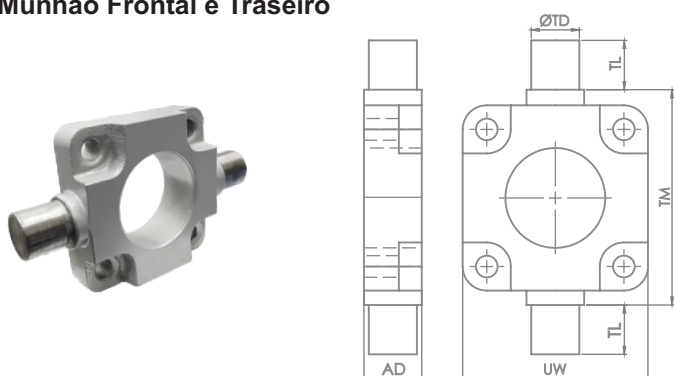
Atuador Pneumático ISO 6431 / VDMA 24562 / DIN 24335 - Série CTM

• **Munhão Central Deslocável (Somente Série CTM)**



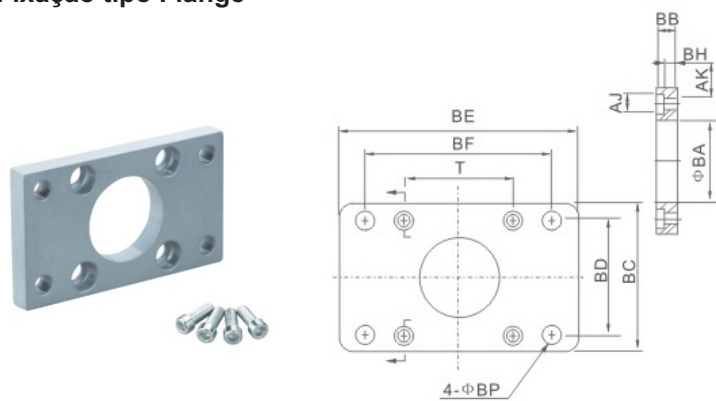
Symbol/Bore	32	40	50	63	80	100
EB	100	113	125	140	160	182
EC	53	63	75	90	105	128
ED	32.5	38	46.5	56.5	72	89
EE	52	63	75	90	110	128
EG	25	25	25	25	25	25
EP	12	16	16	20	20	25
ET	20	22	22	28	28	34
HC	37	45	55	68	87	107.5

• **Munhão Frontal e Traseiro**



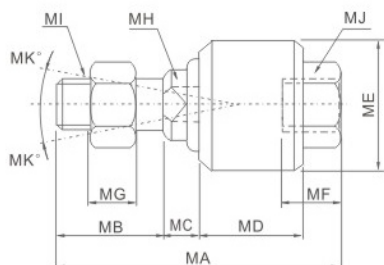
Symbol/Bore	32	40	50	63	80	100
AD	16	20	24	24	27	37
ØTD	12	16	16	20	20	25
UW	46	58	68	82	102	123
TL	12	16	16	20	20	25
TM	50	63	75	90	110	132

• **Fixação tipo Flange**



Symbol/Bore	32	40	50	63	80	100	125	160	200
AJ	11	11	14	14	17	17	19	25	25
AK	7	7	9	9	11	11	13	17	17
BA	30.5	35.5	40.5	45.5	45.5	55.5	60.5	65.5	75.5
BB	10	10	12	12	16	16	20	20	25
BC	47	53	65	75	95	115	140	180	220
BD	32	36	45	50	63	75	90	115	135
BE	80	90	110	125	154	186	224	280	320
BF	64	72	90	100	126	150	180	230	270
BH	4	4	4	6	6	6	8	8	12
BP	7	9	9	9	12.5	14.5	16.5	18.5	24
T	32.5	38	46.5	56.5	72	89	110	140	175

• **Junta Flutuante**



Symbol/Bore	MA	MB	MC	MD	ME	MF	MG	MH	MI	MK
32	58	22	7	21	26	11.5	7	10	M10×1.25	12
40	58	22	8	21	28	11.5	8	12	M12×1.25	12
50	90	27	10	41	44.5	20	10	17	M16×1.5	7
63	90	27	10	41	44.5	20	10	17	M16×1.5	7
80	102	29	13	46	53	24	13	22	M20×1.5	10
100	102	29	13	46	53	24	13	22	M20×1.5	10
125	147	54	13	64	62	39	14	30	M27×2.0	9
160	147	43	23	58	88	35	13.5	36	M36×2.0	15
200	147	43	23	58	88	35	13.5	36	M36×2.0	15