




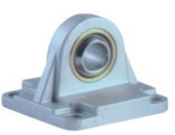

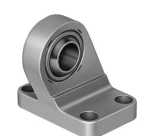

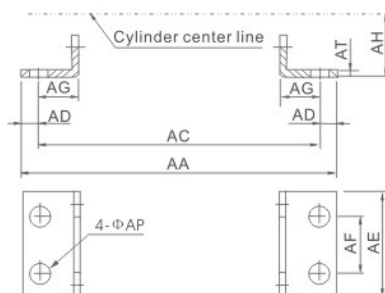


**Atuador Pneumático ISO1552 - Série CP2M**
**Acessórios de Montagem**

Fixação tipo Pés	Rótula Esférica	Fixação Traseira Macho	Fixação Traseira Fêmea	Fixação Traseira Macho Deslocado	Fixação Traseira Macho c/ Rótula	Fixação tipo Flange
						
Código (Ø)	Código (Ø)	Código (Ø)	Código (Ø)	Código (Ø)	Código (Ø)	Código (Ø)
L32	K25/32	C32	D32	E32	CS32	F32
L40	K40	C40	D40	E40	CS40	F40
L50	K50/63	C50	D50	E50	CS50	F50
L63	K80/100	C63	D63	E63	CS63	F63
L80	K125	C80	D80	E80	CS80	F80
L100	K160	C100	D100	E100	CS100	F100
L125	K200	C125	D125	E125		F125
L160		C160	D160			F160
L200		C200	D200			F200

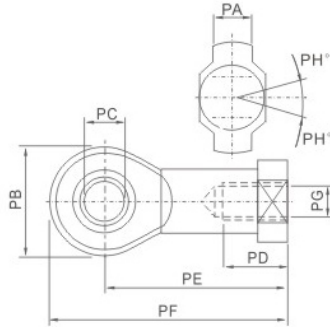
Munhão Frontal / Traseiro	Junta Flutuante	Garfo para Haste	Pino para Garfo	Fixação Traseira Macho Deslocado c/ Rótula	Guia Linear
					
Código (Ø)	Código (Ø)	Código (Ø)	Código (Ø)	Código (Ø)	Código (Ø)
TF32	JF32	G32	I-32	ES32	GB32 / GR32
TF40	JF40	G40	I-40	ES40	GB40 / GR40
TF50	JF50/63	G50/63	I-50/63	ES50	GB50 / GR50
TF63	JF80/100	G80/100	I-80/100	ES63	GB63 / GR63
TF80	JF125	G125	I-125	ES80	GB80 / GR80
TF100	JF160/200	G160/200	I-160/200	ES100	GB100 / GR100
				ES125	
				ES160	
				ES200	

**Dimensional**
**• Fixação tipo Pés**


Symbol/Bore	32	40	50	63	80	100	125	160	200
AA	158	179	190	209	248	266	290	340	380
AC	142	161	170	185	210	228	250	300	320
AD	8	9	10	12	19	19	20	20	30
AE	47	53	65	75	95	115	140	180	220
AF	32	36	45	50	63	75	90	115	135
AG	24	28	32	32	41	45	45	60	70
AH	32	36	45	50	63	71	90	115	135
AP	7	9	9	9	12	14.5	16.5	18.5	24
AT	3	3	3	3	4	4	6	6	9

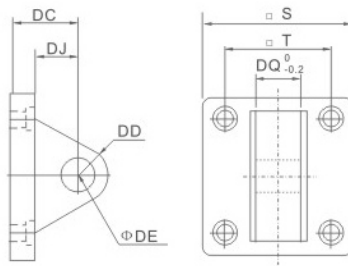
## Atuador Pneumático ISO1552 - Série CP2M

### • Rótula Esférica



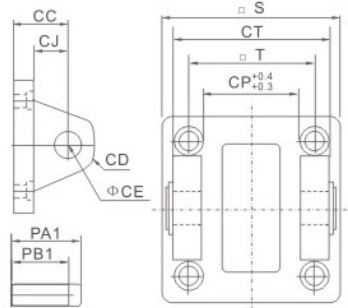
Symbol/Bore	PA	PB	PC	PD	PE	PF	PG	PH
32	11	26	10	21	43	56	M10×1.25	13
40	12	30	12	24	50	65	M12×1.25	13
50	15	38	16	33	64	83	M16×1.5	15
63	15	38	16	33	64	83	M16×1.5	15
80	18	46	20	40	77	100	M20×1.5	15
100	18	46	20	40	77	100	M20×1.5	15
125	37	70	30	51	110	145	M27×2.0	15
160	43	80	35	56	125	165	M36×2.0	16
200	43	80	35	56	125	165	M36×2.0	16

### • Fixação Traseira Macho



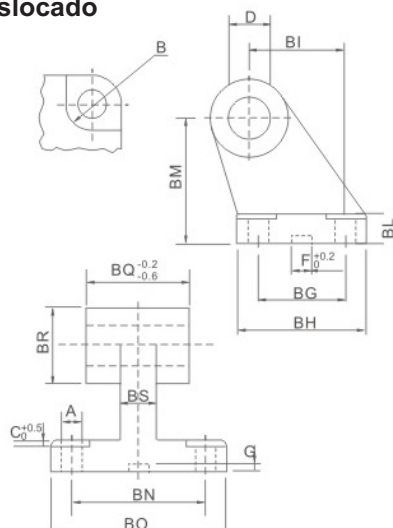
Symbol/Bore	32	40	50	63	80	100	125	160	200
S	47	53	65	75	95	115	140	180	220
T	32.5	38	46.5	56.5	72	89	110	140	175
DC	22	25	27	32	36	41	50	55	60
DD	9	12	12	15	15	20	25	30	30
DE	10	12	12	16	16	20	25	30	30
DJ	13	16	17	22	22	27	33	35.5	36
DQ	25.8	27.8	31.7	39.7	49.7	59.7	69.7	89.7	89.7

### • Fixação Traseira Fêmea



Symbol/Bore	32	40	50	63	80	100	125	160	200
CC	22	25	27	32	36	41	50	55	60
CD	9	12	12	15	15	20	25	30	30
CE	10	12	12	16	16	20	25	30	30
CJ	13	16	17	22	22	27	31	35.5	36
CP	26	28	32	40	50	60	70	90	90
CT	45	52	60	70	90	110	130	170	170
PA1	51	59	67	77	97	119	139	181	181
PB1	45.5	52.5	60.5	70.5	90.5	110.5	130.5	170.5	170.5
S	47	53	65	75	95	115	140	180	220
T	32.5	38	46.5	56.5	72	89	110	140	175

### • Fixação Traseira Macho Deslocado

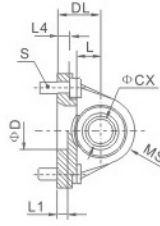
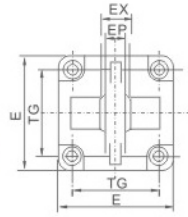


Symbol/Bore	32	40	50	63	80	100	125
A	6.6	6.6	9	9	11	11	14
B	11	11	15	15	18	18	20
BG	18	22	30	35	40	50	60
BH	31	35	45	50	60	70	90
BI	21	24	33	37	47	55	70
BL	8	10	12	14	14	17	20
BM	32	36	45	50	63	71	90
BN	38	41	50	52	66	76	94
BO	51	54	65	67	86	96	124
BS	10	15	16	16	20	20	30
BR	20	22	26	30	30	38	45
C	1.6	1.6	1.6	1.6	2.5	2.5	3.2
D	10	12	12	16	16	20	25
F	10.5	10.5	10.5	10.5	10.5	10.5	10.5
G	3	3	3	3	3	3	3
BQ	26	28	32	40	50	60	70

ISO-SDB Type

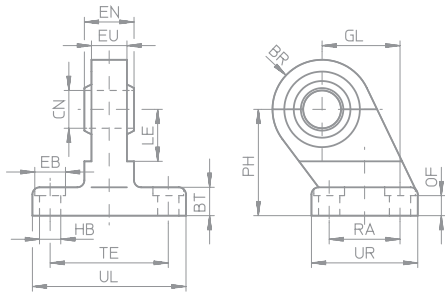
## Atuador Pneumático ISO1552 - Série CP2M

### • Fixação Traseira Macho com Rótula Esférica



Symbol/Bore	32	40	50	63	80	100
TG	32.5	38	46.5	56.5	72	89
ΦCX	10	12	16	16	20	20
DL	22	25	27	32	36	41
L	12	15	15	20	20	25
EX	14	16	21	21	25	25
EP	10.5	12	15	15	18	18
S	M6×20	M6×20	M8×20	M8×20	M10×25	M10×25
L4	5.5	5.5	6.5	6.5	10	10
D	30	35	40	45	45	55
L1	7	7	7	7	9	9
E	45	52	65	75	95	115
MS	16	18	21	23	28	30

### • Fixação Traseira Macho Deslocado com Rótula Esférica



Symbol/Bore	32	40	50	63	80	100	125
BR	15	17	20	22	27	29	39
BT	10	10	12	12	14	15	20
ØCN	10	12	16	16	20	20	30
ØEB	11	11	14	14	17	17	19
EN	14	16	21	21	25	25	37
ER	15.5	17.5	20.5	22.5	28.5	29.5	39.5
EU	10.5	12	15	15	18	18	25
GL	21	24	33	37	47	55	70
HB	6.6	6.6	9	9	10	10	14
LE	16	20	24	27	31	38	50
OF	9	9	11	11	12.5	13.5	18.5
PH	32	36	45	50	63	71	90
RA	18	22	30	35	40	50	60
TE	38	41	50	52	66	76	94
UL	51	54	65	67	86	96	124
UR	31	35	45	50	60	70	90

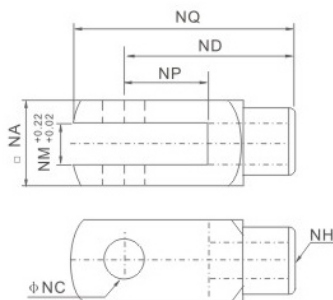
### • Garfo para Haste



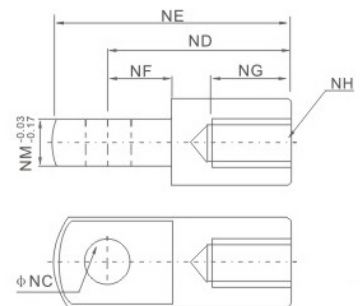
Modelo "G"



Modelo "I"



Modelo "G"

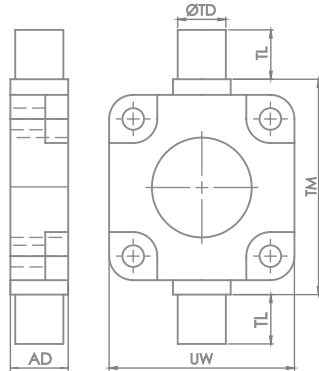
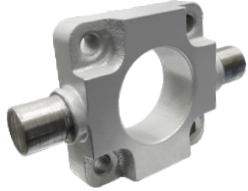


Modelo "I"

Symbol/Bore	32	40	50	63	80	100	125	160	200
NA	19	25.4	32	32	44.4	44.4	55	70	70
NC	10	12	16	16	20	20	30	35	35
ND	40	48	64	64	80	80	110	144	144
NE	52	67	89	89	112	112	155	201	201
NF	15	24	32	32	40	40	50	50	55
NG	20	20	23	23	30	30	56	72	72
NH	M10×1.25	M12×1.25	M16×1.5	M16×1.5	M20×1.5	M20×1.5	M27×2.0	M36×2.0	M36×2.0
NM	10	12	16	16	20	20	30	35	35
NP	20	24	32	32	40	40	54	72	72
NQ	52	62	83	83	105	105	148	191	191
PA	26.2	32.8	39.3	39.3	53.3	53.3	64	80	80
PB	20	26.5	33	33	45	45	55.6	70.6	70.6

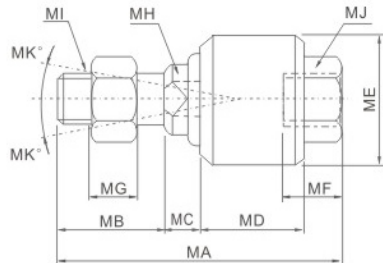
## Atuador Pneumático ISO1552 - Série CP2M

### • Munhão Frontal / Traseiro



Symbol/Bore	32	40	50	63	80	100
AD	16	20	24	24	27	37
ØTD	12	16	16	20	20	25
UW	46	58	68	82	102	123
TL	12	16	16	20	20	25
TM	50	63	75	90	110	132

### • Junta Flutuante



Symbol/Bore	MA	MB	MC	MD	ME	MF	MG	MH	MI	MK
32	58	22	7	21	26	11.5	7	10	M10×1.25	12
40	58	22	8	21	28	11.5	8	12	M12×1.25	12
50	90	27	10	41	44.5	20	10	17	M16×1.5	7
63	90	27	10	41	44.5	20	10	17	M16×1.5	7
80	102	29	13	46	53	24	13	22	M20×1.5	10
100	102	29	13	46	53	24	13	22	M20×1.5	10
125	147	54	13	64	62	39	14	30	M27×2.0	9
160	147	43	23	58	88	35	13.5	36	M36×2.0	15
200	147	43	23	58	88	35	13.5	36	M36×2.0	15

### • Guia Linear



**G**  
Modelo

Deslizante		Ø do Cilindro
<b>B</b>	Bucha de latão	32
<b>R</b>	Rolamentos de esfera	40
		50
		63
		80
		100

Cursos (mm)
10 à 500

Exemplo: **GB32-100**  
**GR80-220**

Para dimensional da peça, consultar o catálogo completo