



GHPC[®]
Tecnologia em Produtos Pneumáticos

Catálogo Técnico

Atuador Rotativo de Palheta

Série CRS





GHPC[®]

Tecnologia em Produtos Pneumáticos

Atuador Rotativo de Palheta - Série CRS

Vantagens

- Compacto e Leve
- Ângulo ajustável: **90°, 180° e 270°**
- Grande torque
- Com custo reduzido



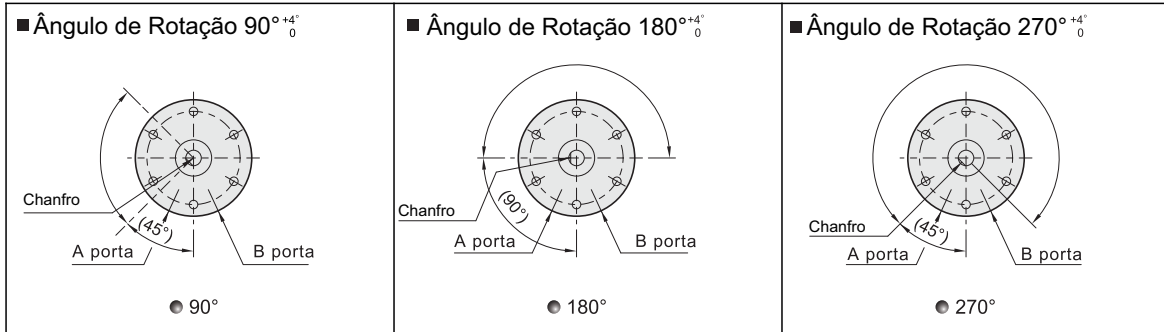
CRS Ø10,15,20,
30 e 40mm



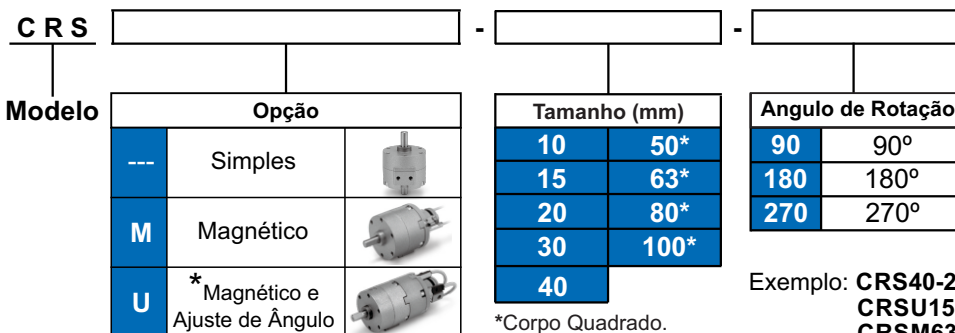
CRS Ø50,80 e
100mm.

Características Técnicas

Modelo (tamanho)	CRS10	CRS15	CRS20	CRS30	CRS40
Operação	Dupla Ação				
Fluido	Ar (sem lubrificação)				
Torque (Nm)	0.14	0.38	0.78	1.8	3.8
Rosca de Alimentação	M5				
Rotação	90°, 180°, 270°				
Pressão de Trabalho(Bar)	1.5 ~ 7				
Temperatura de Trabalho (C°)	5 ~ 60°				
Energia cinética admissível (J)	0.0015	0.001	0.003	0.02	0.04

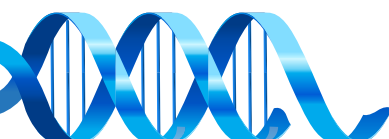
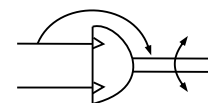


Codificação



*Disponível somente até o tamanho de 40.

Simbologia



Sensor Magnético Aplicável



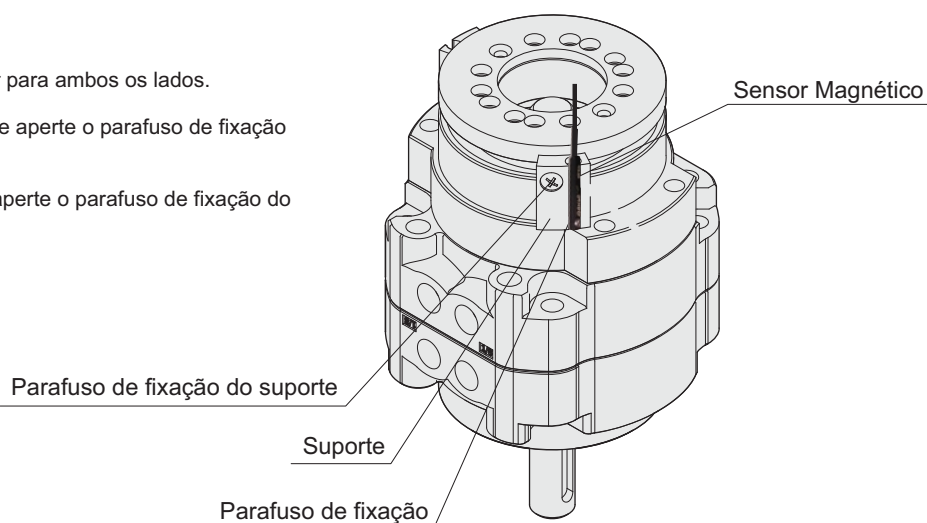
SM-07 -

Sinal		Saída	
R	Reed (2 fios)	2M	Cabo 2 metros
P	PNP (2 fios)	M8	Conector M8
N	NPN (3 fios)		

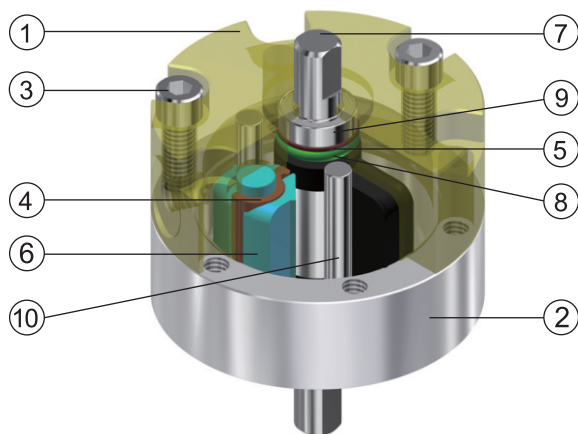
Exemplo: **SM-07R-2M**
SM-07P-M8

Método de Ajuste do sensor:

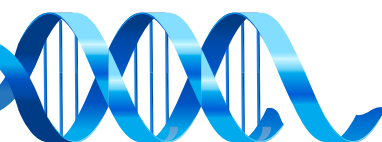
1. Solte o parafuso do suporte para que possa deslizar para ambos os lados.
2. Insira o sensor no suporte nivelando-o com o fundo e aperte o parafuso de fixação para travá-lo.
3. Ajuste o suporte no ângulo desejado e em seguida aperte o parafuso de fixação do mesmo.



Construção



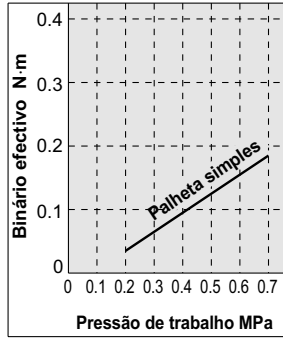
	Descrição	Material	Qtd
1	Tampa Traseira	Liga de Alumínio Anodizado	1
2	Tampa Dianteira	Liga de Alumínio Anodizado	1
3	Parafuso	Aço Carbono	3
4	Vedação Especial	NBR	1
5	Junta	NBR	2
6	Batente	Resina	1
7	Eixo	Aço Inoxidável	1
8	O-ring	PU	2
9	Rolamento	Rolamento de esfera	2
10	Pino	Eixo de Aço	2



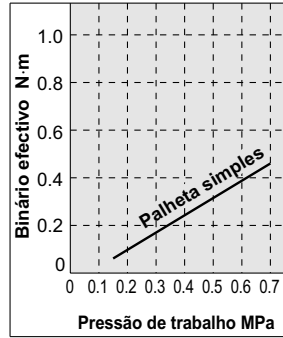
Atuador Rotativo de Palheta - Série CRS

Força Efetiva

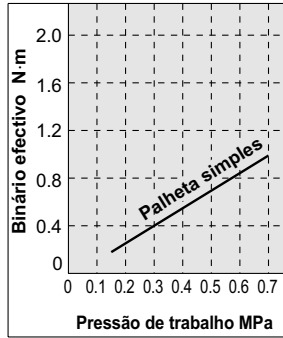
CRS10



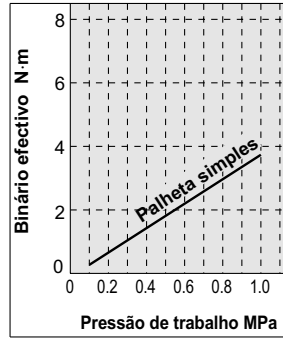
CRS15



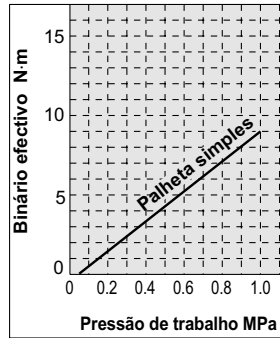
CRS20



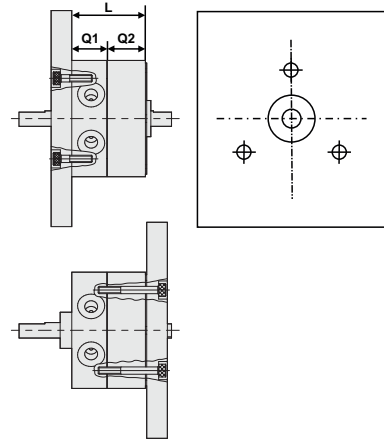
CRS30



CRS40



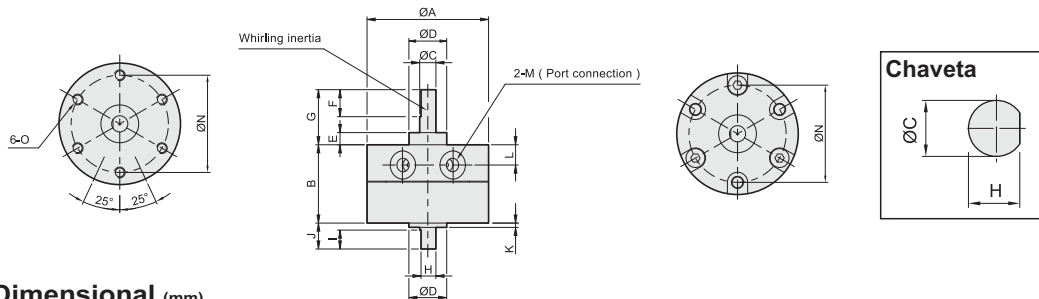
Montagem directa do corpo



A dimensão "L" dos actuadores é fornecida na tabela abaixo para os parafusos da tampa sextavados de norma JIS. Se utilizar este tipo de parafusos as cabeças vão encaixar no orifício de montagem.

Tipo	L	Parafuso
CRS10	11.5	M2.5
CRS15	16	M2.5
CRS20	24.5	M3
CRS30	34.5	M4
CRS40	39.5	M4

Dimensional

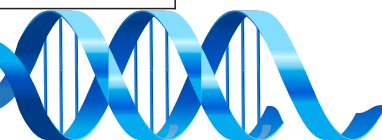


Dimensional (mm)

Modelo	A	B	C	D	E	F	G	H	I	J	K	L	M	N	O
CRS10-90															
CRS10-180	30	17	4	9	3	9	14	3.5	5	8	1	4.2	M5x0.8p	24	M3x0.5p
CRS10-270															
CRS15-90															
CRS15-180	35	20.1	5	12	4	10	18	4.5	6	9	1.5	5	M5x0.8p	29	M3x0.5p
CRS15-270															
CRS20-90															
CRS20-180	44	29.1	6	14	4.5	10	20.3	5.5	7	9.6	1.6	8.5	M5x0.8p	36	M4x0.7p
CRS20-270															
CRS30-90															
CRS30-180	51	40	8	16	5	12	22	7.5	8	13	2	11	M5x0.8p	43	M5x0.8p
CRS30-270															
CRS40-90															
CRS40-180	64	45	10	25	6.5	22	30	9	9	15	4.5	9.5	M5x0.8p	56	M5x0.8p
CRS40-270															

Peso

Modelo	CRS10	CRS15	CRS20	CRS30	CRS40
Peso	28g	48g	112g	200g	342g





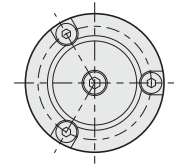
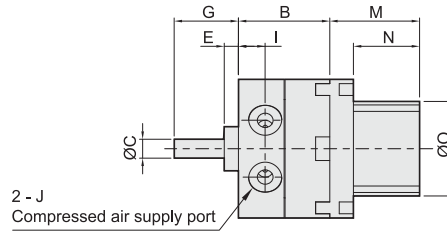
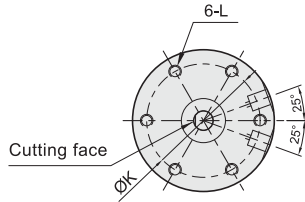
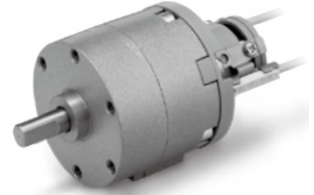
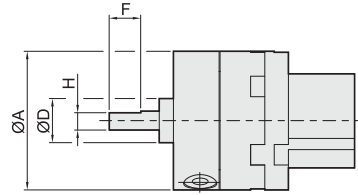
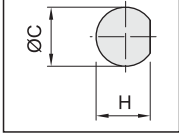
GHPC®

Tecnologia em Produtos Pneumáticos

Atuador Rotativo de Palheta - Série CRS

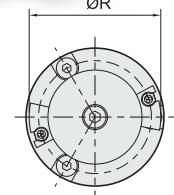
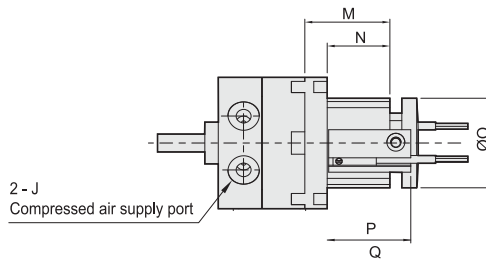
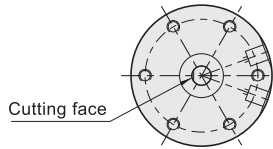
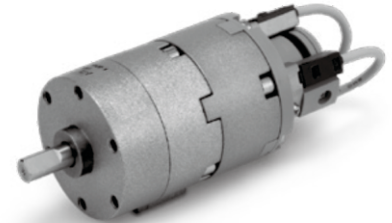
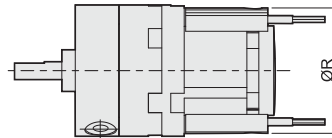
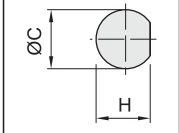
CRSM - com Magnético

Chaveta



CRSU - com Magnético e Ajuste de ângulo

Chaveta

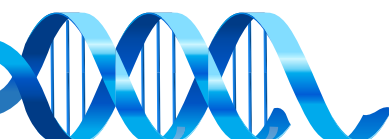


Dimensional (mm)

Modelo	A	B	C	D	E	F	G	H	I	J	K	L	M	N	O	P	Q	R
CRS10-90																		
CRS10-180	30	17	4	9	3	9	14	3.5	4.2	M5x0.8p	24	3x0.5p	24	18	18	23.3	24	29
CRS10-270																		
CRS15-90																		
CRS15-180	35	0.	5	12	4	10	18	4.5	5	M5x0.8p	29	3x0.5p	28	22	24	27.3	29.5	34
CRS15-270																		
CRS20-90																		
CRS20-180	44	9.	6	14	4.5	10	20.3	5.5	8.5	M5x0.8p	36	4x0.7p	28.	21	30	28	30.5	42
CRS20-270																		
CRS30-90																		
CRS30-180	51	40	8	16	5	12	22	7.5	11	M5x0.8p	43	5x0.8p	32.	24	34	30.8	34	47
CRS30-270																		
CRS40-90																		
CRS40-180	64	45	10	25	6.5	22	30	—	9.5	M5x0.8p	56	5x0.8p	34.	26	34	33	36	47
CRS40-270																		

Peso

Modelo	CRS10	CRS15	CRS20	CRS30	CRS40
Peso	78g	116g	240g	390g	604g

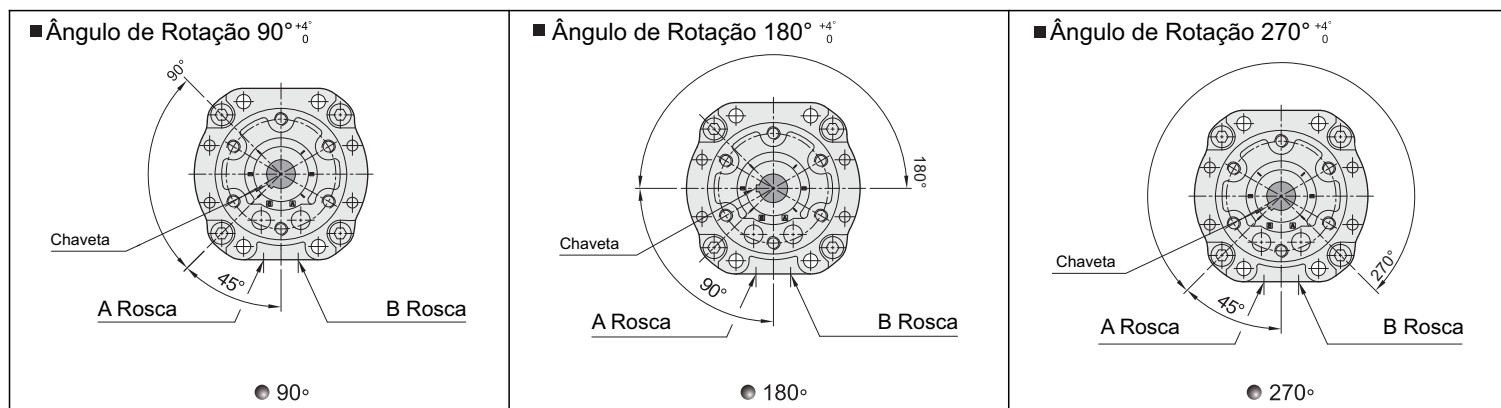


Atuador Rotativo de Palheta - Série CRS50/63/80 e 100.

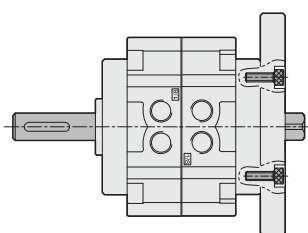
Características Técnica Tamanho 50/63/80 e 100.

Modelo (tamanho)	CRS50	CRS63	CRS80	CRS100
Operação	Dupla Ação			
Fluido	Ar (sem lubrificação)			
Torque (Nm)	5	10	18	35
Rosca de Alimentação	RC1/8"		RC1/4"	
Rotação	90°, 180°, 270°			
Pressão de Trabalho(Bar)	1.5 ~ 7			
Temperatura de Trabalho (C°)	5 ~ 60°			
Energia cinética admissível (J)	0.082	0.12	0.39	0.6

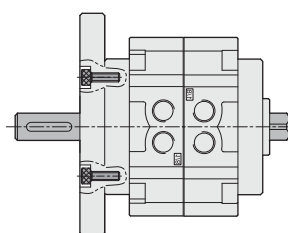
Ângulo de Rotação



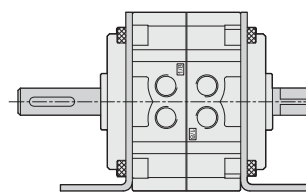
Tipo de Montagem



● Montagem Traseira



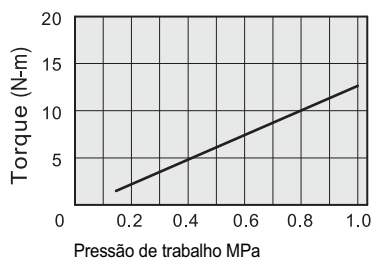
● Montagem Frontal



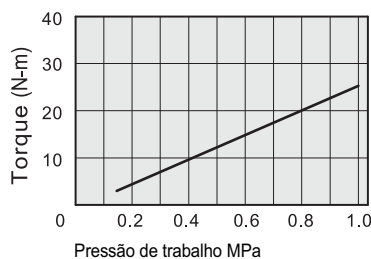
● Montagem por Pés

Força Efetiva

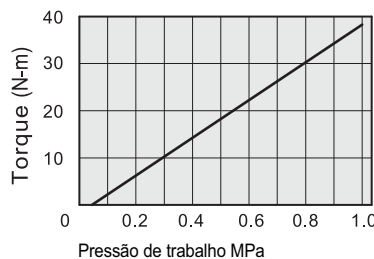
CRS50



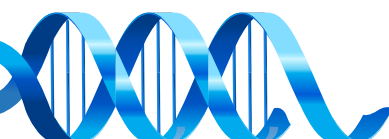
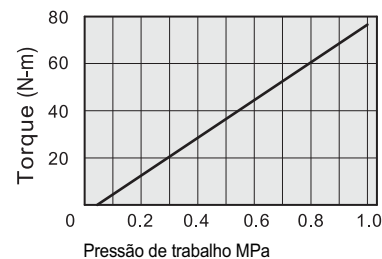
CRS63



CRS80

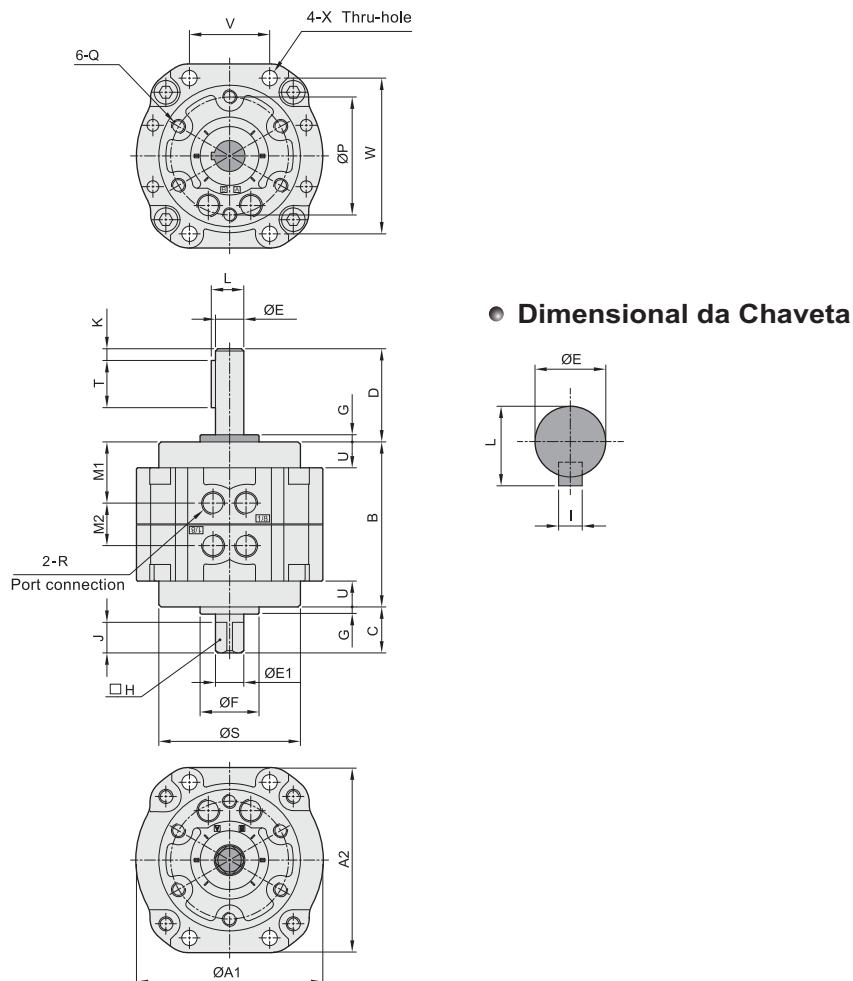


CRS100



Atuador Rotativo de Palheta - Série CRS

Dimensional CRS Básico Tamanho 50/63/80 e 100.

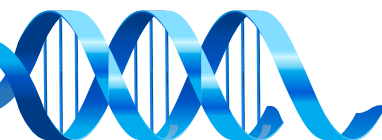


Dimensional (mm)

Modelo	A1	A2	B	C	D	E	F	G	H	I	J	K	L	M1	M2	P	Q	R	S	T	U	V	W	ØX
CRS50-90																								
CRS50-180	79	78	70	19.5	39.5	12	25	3	10	4	13	5	13.5	26	18.2	50	M6X1.0P	RC1/8"	60	20	11	34	66	6.5
CRS50-270																								
CRS63-90																								
CRS63-180	98	98	80	21	45	15	28	3	12	5	14	5	17	28.9	22.2	60	M8X1.25P	RC1/8"	75	25	14	39	83	9
CRS63-270																								
CRS80-90																								
CRS80-180	110	110	90	23.5	53.5	17	30	3	13	5	16	5	19	30	30.2	70	M8X1.25P	RC1/4"	88	41	15	48	94	9
CRS80-270																								
CRS100-90																								
CRS100-180	140	140	103	30	65	25	45	4	19	7	22	5	28	35.4	32.2	80	M10X1.5P	RC1/4"	108	40	11.5	60	120	11
CRS100-270																								

Peso

Modelo	CRS50	CRS63	CRS80	CRS100
Peso	760g	1.29kg	1.92kg	3.56kg



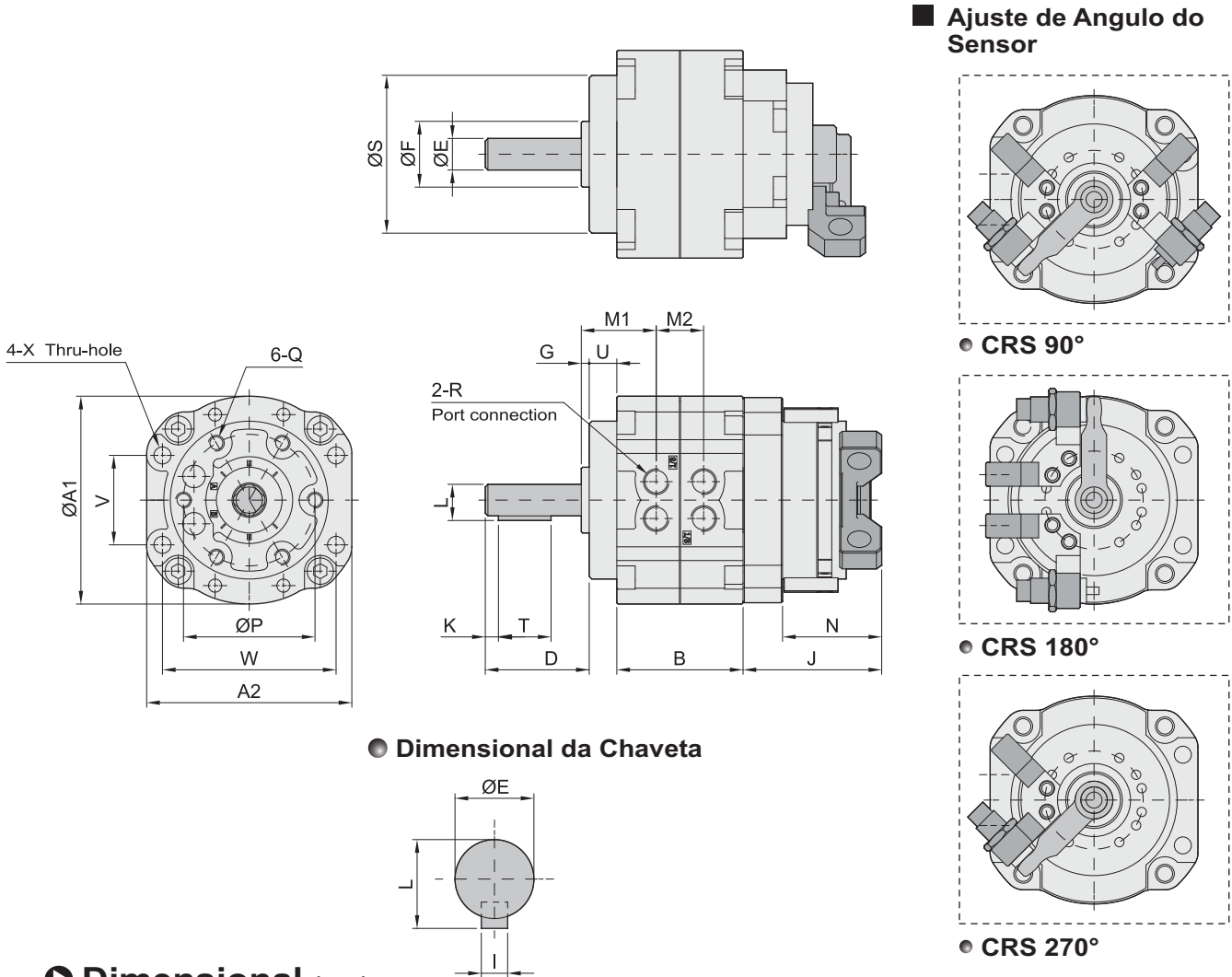


GHPC®

Tecnologia em Produtos Pneumáticos

Atuador Rotativo de Palheta - Série CRS

Dimensional CRS Magnético com Ajuste de Ângulo, Tamanho 50/63/80 e 100.



Dimensional (mm)

Modelo	A1	A2	B	D	E	F	G	I	J	K	L	M1	M2	N	P	Q	R	S	T	U	V	W	ØX
CRS50-90																							
CRS50-180	79	78	48	50.5	12	25	3	4	52.7	5	13.5	29	18	37.7	50	M6x1.0P	RC 1/8"	60	20	11	34	66	6.5
CRS50-270																							
CRS63-90																							
CRS63-180	98	98	52	59	15	28	3	5	56.4	5	17	31.9	22.2	37.7	60	M8x1.25P	RC 1/8"	75	25	14	39	83	9
CRS63-270																							
CRS80-90																							
CRS80-180	110	110	60	68.5	17	30	3	5	58.9	5	19	33	30	39.2	70	M8x1.25P	RC 1/8"	88	36	15	48	94	9
CRS80-270																							
CRS100-90																							
CRS100-180	140	140	80	76.5	25	45	4	7	62.9	5	28	39.4	32.2	39.2	90	M10x1.5P	RC 1/4"	108	40	11.5	60	120	11
CRS100-270																							

Peso

Modelo	CRS50	CRS63	CRS80	CRS100
Peso	1,1kg	1.5kg	2,3kg	3,9kg

