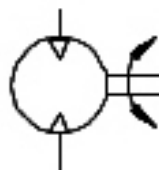


Motor Pneumático - MA-050



Simbologia

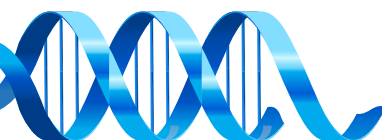
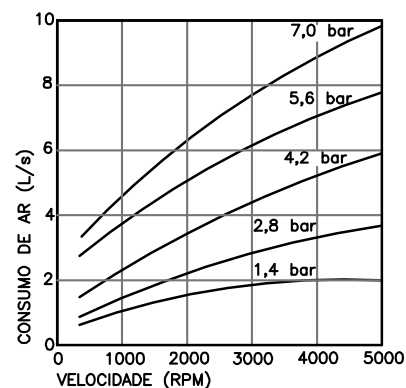
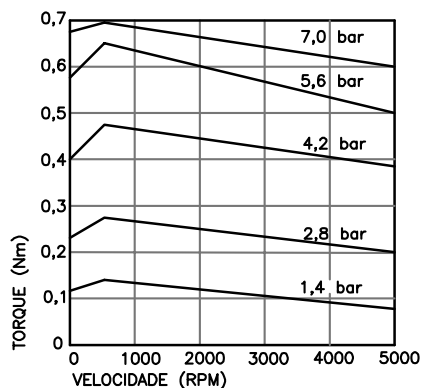
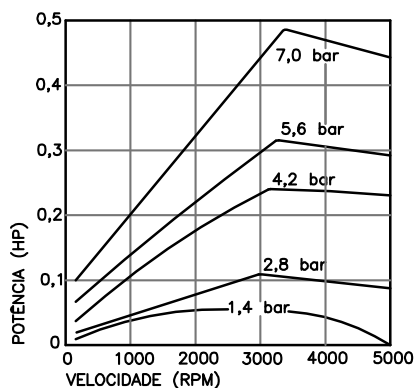


Características Técnicas	
Potência	0,5 HP
Torque (Máx.)	0,7 Nm
Rotação	500 à 5000 RPM
Reversível	Sim
Rosca Entr. e Saída de Ar	1/8" BSP
Pressão	3 à 7 Bar
Peso	1,3 Kg

Codificação

MA - 050

Curvas do Motor





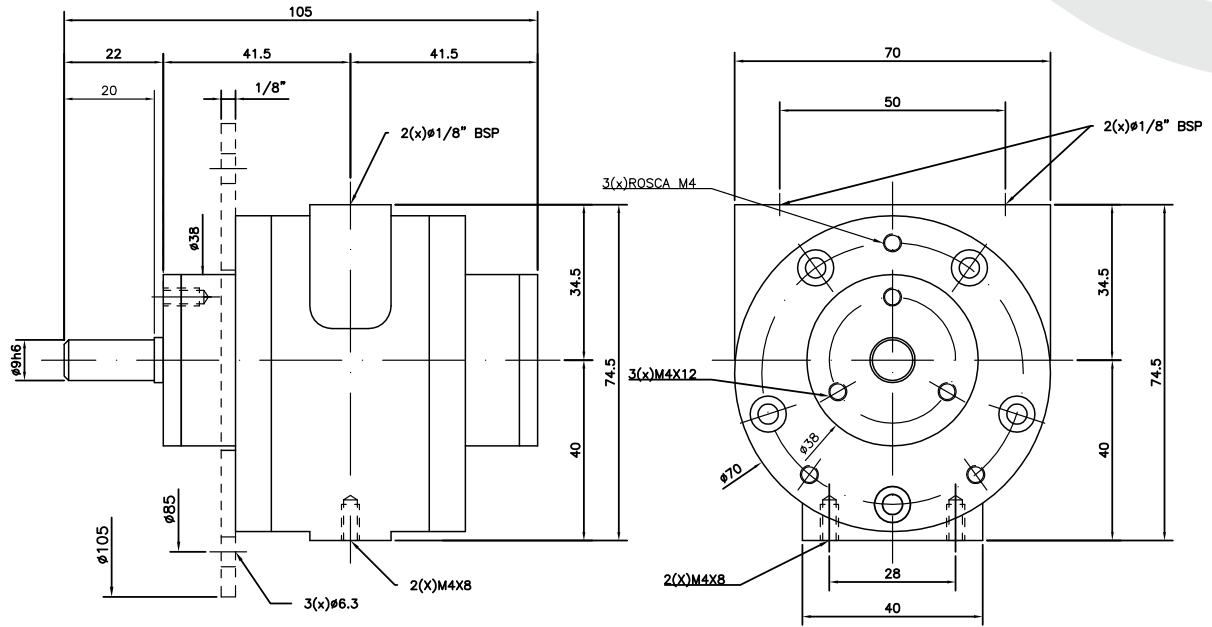
GHPC[®]

Tecnologia em Produtos Pneumáticos

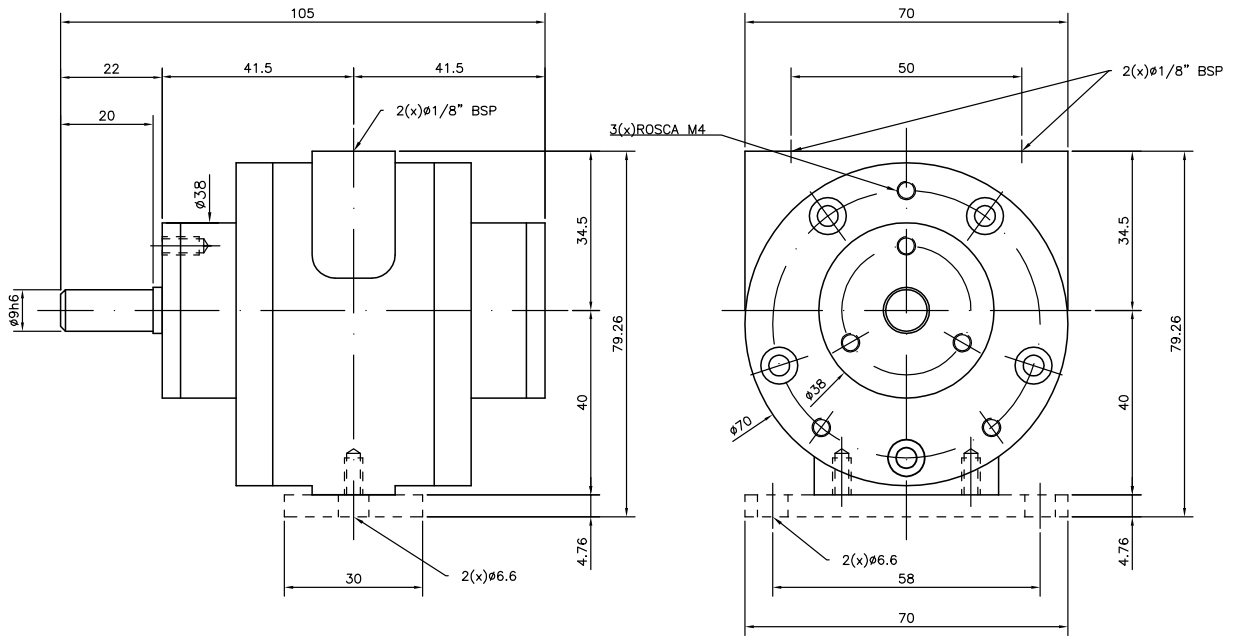
Motor Pneumático - MA-050

Dimensional

FORMA CONSTRUTIVA COM FLANGE



FORMA CONSTRUTIVA COM BASE



DETALHE DA CHAVETA

