

Alongamentos (Série 61200)

 **Prolongación** (Serie 61200)

 **Extensions** (61200 Seies)

Aplicações / Aplicaciones / Applications



Propriedades

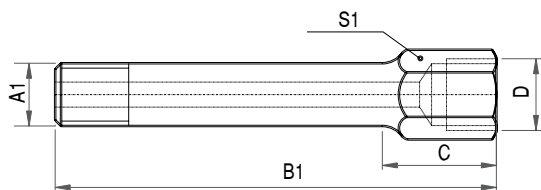
Principal aplicação: refrigeração de moldes e matrizes
Principal fluido de passagem: óleo hidráulico e água
Material: latão

Propiedades

Principal aplicación: refrigeración de moldes y matrices
Principal fluido de pasaje: aceite hidráulico y agua
Material: latón

Features

Main application: refrigeration systems, pneumatic systems, injection molding machines
Main fluid of passage: water and oil
Material: brass



Macho / Macho / Male

Código Código Code	A1 Rosca Rosca Thread	Torque Torque Torque Nm	B1 mm (in)	C mm (in)	S1 mm (in)	D Rosca Rosca Thread	Peso Peso Wight g	Estoque Stock Stock
116.061201.0	1/4" NPT (ext.)	13 - 19	50,0 (1.969")	23,0 (0.906")	17,50 (11/16")	1/4" NPT (int.)	46	✓
116.061202.0	1/4" NPT (ext.)	13 - 19	75,0 (2.953")	23,0 (0.906")	17,50 (11/16")	1/4" NPT (int.)	64	✓
116.061203.0	1/4" NPT (ext.)	13 - 19	100,0 (3.937")	23,0 (0.906")	17,50 (11/16")	1/4" NPT (int.)	80	✓

(int.) Rosca Interna / Rosca Interna / Internal Thread
(ext.) Rosca Externa / Rosca Externa / External Thread

✓ Normal de Linha / Disponible / Available
🔍 Sob Consulta / Bajo Pedido / On request